

NW COR. OF SE 1/4  
SEC. 21-14-11

GOLDENSTEIN 2ND ADDITION  
2

NE COR. OF SE 1/4  
SEC. 21-14-11

UNPLATTED

UNPLATTED

26

CINNAMON DRIVE

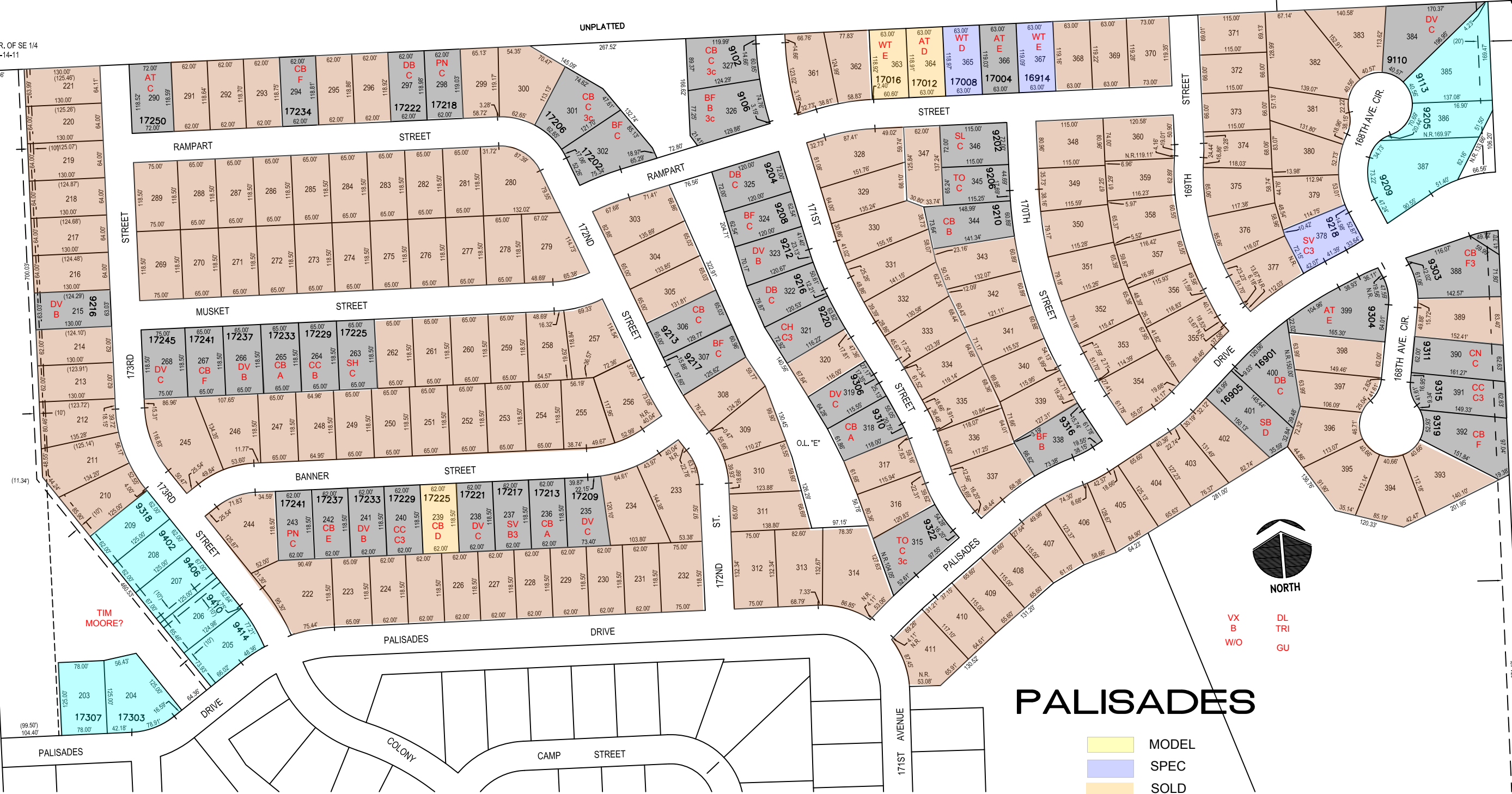
27

32

CINNAMON ACRES REPLAT

33

37



NORTH

VX  
B  
W/O

DL  
TRI  
GU

# PALISADES

- MODEL
- SPEC
- SOLD
- LOTS RELEASED
- CLOSED
- BASIN
- EXISTING HOMES